

1. Scope :

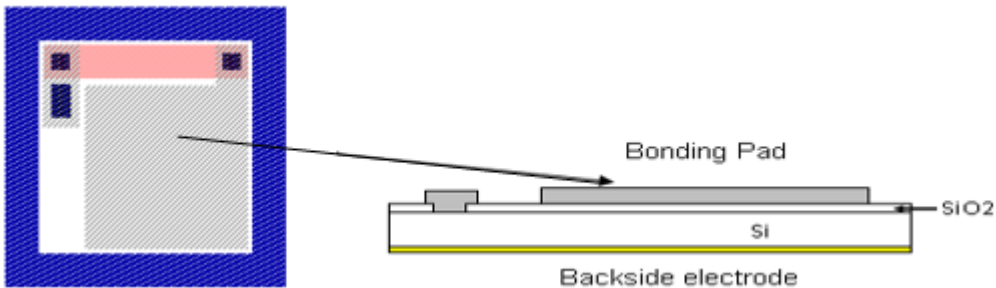
This specification applies to silicon resistor chips,
Device No. CR-0006A.

2. Structure :

- 2-1. Silicon substrate .
- 2-2. Electrodes :
Top side : Aluminum alloy .
Back side : Gold.

3. Size :

- 3-1. Chip size (Including scribe line) : 6.88 x 6.88 mils (0.175 x 0.175 mm).
- 3-2. Chip thickness : 5.12 ± 0.59 mils (0.130mm ± 0.015 mm).
- 3-3. Bonding pad : 3.937 mils x 3.937 mils (0.100 mm x 0.100 mm).
- 3-4. Pattern drawing : Refer to the attached drawing.



4. Absolute maximum rating (Ta = 25°C)

Parameter	Symbol	Rating	Unit
Apply current	I	10	m A
Operating temperature	Topr	-40~+85	°C
Storage temperature	Tstg	-40~+100	°C

5. Electrical characteristics (Ta = 25 °C)

APPLY CURRENT (mA)	RESISTOR(Ω)			UNIT
	MIN	TYP	MAX	ohm
10	405	450	495	ohm
10	630	700	770	ohm
10	810	900	990	ohm
10	900	1000	1100	ohm
10	1080	1200	1320	ohm